



# E&S sweets

GIFTING  
CATALOG





## OUR STORY

# E AND S SWEETS



We are a mother, daughter-in-law team at E and S Sweets. How did we come up with the name? It was easy breezy, our children are Eric and Scott & Eli and Sam, it was meant to be. We invite you to stop in and check out our nostalgic selection of candy, hand scooped ice cream, locally made popcorn, chocolates, craft soda's and so much more! From ice cream to candied nuts, when you are in the mood for something sweet, E and S Sweets is the destination for the whole family.

You can find the retro candy from your childhood. Since we are two generational owners, we guarantee that you will find candy from the fabulous 40's though the totally awesome 80's and beyond.

We are so happy to welcome these oldies but goodies. You can always count on these favorites: candy sticks, Fun Dip, Jawbreakers, Candy Cigarettes, Bottle Caps, Zotz, Fruit Stripe Gum, Gold Mine Gum, Pop Rocks, Rootbeer Barrels, Lemon Drops, Atomic Fireballs, and so much more!

We are delighted to share the good times with friends and neighbors of all ages. We look forward to meeting you and your family.

*Thank you!*  
*Kris and Lisa*



TABLE OF CONTENTS

# E AND S SWEETS



---

ABOUT OUR GIFTS .....	4
WHIRLY POPS® .....	5
GIFT BOXES, BASKETS AND CRATES .....	6
MARKET TRAYS .....	7
TWO TREAT BOXES .....	8
SWEET FAVORS .....	9
PAINT CANS .....	10
BULK CANDY BY COLOR .....	11
ORDERING INFORMATION .....	12 - 13

# E AND S SWEETS



## OUR GIFTS

We create corporate gifts customized by you and we are here to help. We specialize in nostalgic candies, but can also include current day favorites.



## YOUR BUDGET

Let us know your price range and we will create a corporate gift to meet your needs.



## CUSTOMIZED

Tell us what your favorite flavors or types of candy are and we can create something very special just for your occasion.

*Classic treats, meet mouthwateringly chic! A sure-fire winner for any gift or event, pick up a few of these top picks that'll melt hearts and impress taste buds.*





## WHIRLY POPS®

### DETAILS:

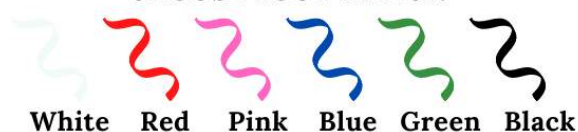
Enjoy every lick of this sweet classic! Our nostalgic Whirly Pop® is great as a event or party favor.

QTY	COST EACH	
	3"	5.25"
12-49	\$4.95	\$8.55
50-99	\$4.80	\$8.40
100-199	\$4.60	\$8.20
200 +	\$4.45	\$8.05

\*WHIRLY POP is a registered trademark of Adam & Brooks Inc. WHIRLY POP is sold in assorted colors only.



### CHOOSE YOUR RIBBON



PRICE INCLUDES: Color label, display your logo, branding or message on each product. The label, will cover the Whirly Pop logo. Set Up: \$15. Imprint Size of Label on 3" size: 2.5" Diameter. Imprint Size of Label on 5.25" size: 4" Diameter. PMS Match: As close as possible at no charge. Ribbon Colors: White, Red, Pink, Blue, Green, Black, custom colors available upon request and based on availability, additional charge may apply.



# GIFT BOXES, BASKETS AND CRATES

## DETAILS

Looking for the best gift E and S Sweets has to offer? Then this is the basket you're looking for! Featuring E and S Sweets' all-time favorites, best sellers and savory sweets, you can't go wrong with this crate.

ITEMS CAN INCLUDE COTTON CANDY, CHOCOLATES, POPCORN, SODA OR NUTS.

\*Please Note: Products may vary slightly from pictured; any substitutions will be made with similar and comparable products.

LOCALLY SOURCED WINE AND SESSION MEAD OPTIONS NOW AVAILABLE



MEAD CRATE  
\$90



WI TREATS CRATE  
\$150



CLIENT THANK YOU  
\$50



APPRECIATION BOX  
\$10

PRICE INCLUDES: Wood crate will have E and S Sweets branding. Set Up: \$15. Item Size: Varies, Ribbon and cellophane added per request.



# MARKET TRAYS

## DETAILS

Celebrate one box at a time with these sets created by our candy experts! With something special for everyone, it's easy to take your gifting to new heights.  
Available in 2 size options: 9 x 7 x 3" and 12 x 9 x 4"



SWEET SNACK  
PACK ATTACK  
**\$30**



WINE NOT?  
**\$45**



SWEET TREAT  
**\$15**



FOR ME, LIFE IS A BOWL  
OF CHERRIES  
**\$25**



THE SAMPLER  
**\$25**

## TWO TREAT BOXES

### DETAILS:

Fresh, packed-to-order candy, chocolates and nuts. Make great gifts for your customers.

QTY	COST EACH
< 50	\$12.50
50-199	\$12.00
200+	\$11.50



### It's Simple!

Pick 2 items from the list below:

*Our candy experts suggest picking a chocolate and candy item combo.*

- Bananarama - 8 oz
- Blue Gummi Sharks - 4 oz
- Butter Toffee Peanuts - 7.5 oz
- Cherry Fruit Sours - 8 oz
- Chewy Spree - 8 oz
- Fruit Runts - 8 oz
- Milk Chocolate Cinnamon Graham Pretzels - 5 oz
- Milk Chocolate Raisins - 8 oz
- Milk Chocolate Triple Dipped Malt Balls - 8 oz
- Sour Large Neon Gummi Worms - 8 oz
- Sour Neon Worms - 8 oz
- White Frosted Pretzels - 8 oz

Looking for variety of different items in each box or something else not on the list, contact us and we customize the boxes just for you.

PRICE INCLUDES: Color label, display your logo, branding or message on each product. Set Up: \$15. Imprint Size of Label: 1.5" x 1.5". PMS Match: As close as possible at no charge. Custom color crinkle paper available upon request and based on availability, additional charge may apply.



## SWEET FAVORS

### DETAILS:

Because the best things in life are meant to be shared, give the candy you love with those you love most. Choose from an assortment of sweets and add your own image, corporate logo, initials, wedding anniversary—just about anything you want!

QTY	COST EACH
25-49	\$2.50
50-99	\$2.35
100-199	\$2.15
200+	\$2.00



PRICE INCLUDES: Color label, display your logo, branding or message on each product. Set Up: \$15. Imprint Size of Label: 1.5" x 1.5". PMS Match: As close as possible at no charge. Ribbon Colors: Jute Cord, White, Red, Pink, Blue, Green, Black, custom colors available upon request and based on availability, additional charge may apply.



CANDY  
RAISINS



CHOCOLATE  
COVERED  
PRETZELS



FRUIT SOUR  
CHERRIES



CHOCOLATE  
COVERED  
RAISINS

# PAINT CANS

## DETAILS

Eye-candy deliciousness! Open one of our artful paint cans packed with color and taste.

ITEMS CAN CONTAIN CANDY BARS, GUMMIES, HARD CANDIES, NUTS OR CHOCOLATES.

*\*Please Note: Products may vary slightly from pictured; any substitutions will be made with similar and comparable products.*

PRICE INCLUDES: Color label on lid. Body of paint can is branded with a custom design. Set Up: \$25. Item Size: Small - 3.9" Diameter x 6.1" High or Large - 6.7" Diameter x 7.9" High. PMS Match: As close as possible at no charge.



SAMPLE LARGE CAN  
\$35



SAMPLE SMALL CAN  
\$20



COLOR YOUR LIFE

# E AND S SWEETS

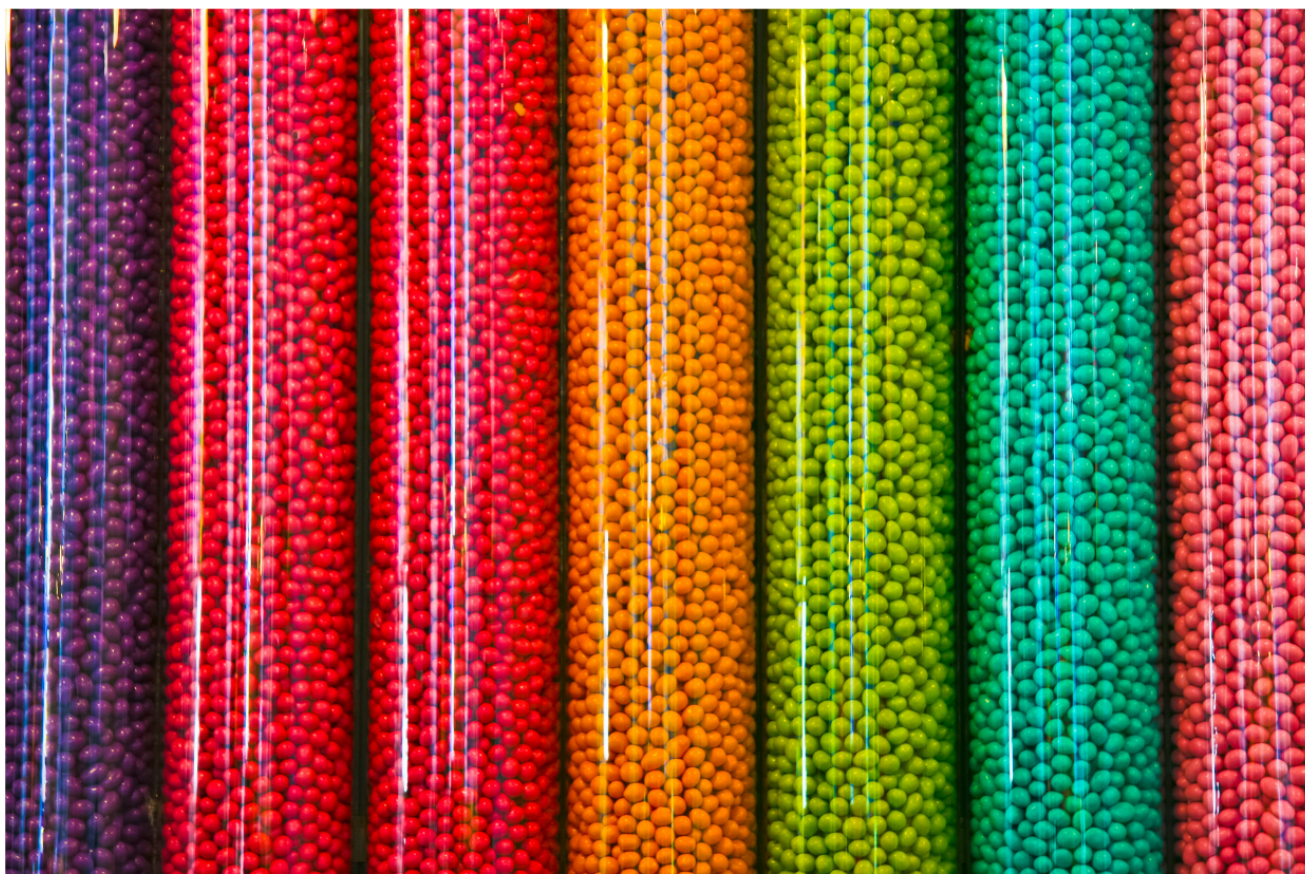


---

## BULK CANDY BY COLOR

Whether you're feeling blue, seeing red, green with envy or tickled pink, We can help you say "hello" to yellow or gets you back to black with our assortment of deliciously colored candies. There are many candies in dozens of colors, bringing colorful, custom fun to any party, theme or occasion. Sure, we know that mixing yellow and blue make green, or red and yellow mix to make orange. But let's think colorfully creative. Shop orange, black, and silver for trick-or-treats to make a deliciously spooky Halloween candy buffet.

Or, shop your favorite sports team's colors to bring the "super" to your candy bowl at your annual party. Bring in the baby blues or princess pinks to celebrate the special little ones in your life, brides, grads, and loved ones too, or creatively customize a colorful theme for your upcoming parties and events. The color combinations & party possibilities are truly endless, so if you bring your colorful creativity, we'll bring the candy and sweets. You just can't go wrong.



## **HOURS**

Orders may be placed over the phone and in person during normal business operating hours or sent via e-mail. To avoid duplication, please indicate if order was previously sent. We will not be responsible for duplicate orders. Order acknowledgements will be sent for each purchase order and must be paid in full prior to pick-up.

## **CHANGES & CANCELLATIONS**

Cancellations or changes to orders must be submitted in writing. Cancellations must be made well in advance to the scheduled date. You may be invoiced for any work already completed. Any type of order change may result in a delay to the original scheduled date. If adding to an order that is already produced but not picked-up, a new purchase order is required and the additional pieces will be produced based on the current production schedule and pricing for that quantity.

## **PRODUCTION TIME**

Production time varies from 10-20 working days after approval. A complete purchase order with all pertinent information is required along with approval of art to begin production.

## **CLAIMS & RETURNS**

Claims must be made within 10 days of receipt of merchandise. Returns must be approved in advance.

## **TRADEMARK USAGE**

All copy or other material submitted by the customer for use by the factory in producing items ordered, whether or not artwork required by the factory is required there with, will be accepted by the plant as being submitted in full compliance with all applicable laws, regarding trademark, service mark, copyright, right of privacy patent or similar protection. The customer, by submitting such a copy or other material, represents that the use thereof by the factory will not violate any such laws in the use of the customer's copy or other material. The customer hereby agrees to hold factory harmless to any damages and/or expenses when they arise under all such laws as consequence of factory's use of said copy or other material or the operations undertaken by this agreement.

## **PRODUCTS**

Products including but not limited to crates, boxes, containers and edible treats may vary from what is shown in catalog. Any substitutions will be made with similar and comparable products, based on availability and production timeframes.



## ARTWORK SPECIFICATIONS

Artwork can be provided as .PNG, .JPG, .JPEG, .TIFF, .BMP or .PDF file format for PC. All fonts must be converted to outlines or curves. Art saved at 300 DPI or higher and actual size is also acceptable. Template and image requests can be e-mailed.

## SHIPPING TERMS

WE CURRENTLY DO NOT HAVE A SHIPPING PROGRAM

Shipping will be consider upon request, all shipping cost shall be paid for by the customer. If shipping instructions are not specified, orders will be shipped according to our best judgment.

WARM WEATHER SHIPPING: If outside temperatures exceed 70 degrees, shipping coolers may be required when shipping chocolate and other meltable items. Pricing will vary based on size of item.

FOREIGN SHIPMENTS: We will not provide shipments outside the continental United States.

## GIFT CARDS

Gift cards can be included with any gift, add \$1.00 per gift card plus a \$15 set up charge if a custom gift card is requested. We'll enclose one gift card with each gift. Rather send us your own pre-printed cards? Just add \$0.25 per card and we will include one with each gift. All cards must be the same or an upcharge of \$2.50 will apply per card.

## SET UP CHARGES

Initial orders are subject to the set up charge(s) listed with the item. Repeat setup charges vary based on item; please contact us.

## RIGHTS TO PROMOTION

We reserve the right to use all products in our advertising and displays unless otherwise notified in writing at time of order.

## DISCLAIMER

Prices are subject to change. We cannot guarantee continuity of exact shade, color, size, weight, texture or construction of finished goods. If a product is not available at time of shipment, a product of equal or greater value may be substituted.

## CONTACT INFORMATION

**Have a question about Corporate Gifts or want to place an order?**

Reach out to **Order@EandSsweets.com** or call us at **(262) 368-3270**

211 N. ROCHESTER ST., MUKWONAGO | EANDSSWEETS.COM